



## Kilnhurst St Thomas' C of E Primary Academy Newsletter – Friday 30<sup>th</sup> January 2026



THE  
DIOCESE OF  
SHEFFIELD  
ACADEMIES  
TRUST

### Behaviour Bees – Celebration Assembly – Monday 2<sup>nd</sup> February 2026



#### Learner Bee of the Week

The following children have been chosen as 'Learner Bee of the Week' by their class teacher. Each child will be presented with a certificate at Monday's Celebration Assembly.

FS1 - Nala-Mae  
FS2 – Archie M  
Class 1 - Harley K  
Class 2 - Axle-Anthony

Class 3 – Brennan  
Class 4 – Frankie T  
Class 5 – Amelia G  
Class 6 – Taylor F

#### Best Worker Bee of the Week

The following children have been chosen as 'Best Worker Bee' by their class teacher. Each child will show their work and be presented with a certificate at Monday's celebration assembly.

FS1 – Freddie G  
FS2 – Videlle  
Class 1 – Bella-Rose  
Class 2 - Archie G

Class 3 – Bradley W  
Class 4 – Aliya J  
Class 5 – Aria T  
Class 6 – Olivia L

Parents/Guardians are welcome to attend the assembly which begins at 9.05am in the Main Hall.

#### Weekly Class Attendance

FS1 – 92%	FS2 – 92.9%	Year 1 – 94.6 %	Year 2 – 95.5%
<b>Year 3 – 97.1%</b>	Year 4 – 92%	Year 5 – 95%	Year 6 – 93.6%

Congratulations to **Year 3**, who are this week's attendance winners. Well done.  
The whole school attendance this week was **94.2%** - just below our target of 95%.



**ATTENDANCE  
MATTERS!  
Everyday. On-time.**

To promote 'Good' attendance in school. Pupils who achieve 100% attendance; and are in school on time each day will have their name put into a prize draw each week at Monday's assembly. The child who has their name drawn will get to choose a prize from Mrs Sherwood dip box.



## Kilnhurst St Thomas' C of E Primary Academy Newsletter – Friday 30<sup>th</sup> January 2026



THE  
DIOCESE OF  
SHEFFIELD  
ACADEMIES  
TRUST

### Reading Awards

The following children have achieved their **Bronze** and **Silver** reading badges. Mrs Sherwood will present each of them with their badges at Monday's celebration assembly. Parents/Guardians are welcome to attend. Well done to you all.

#### Class 1

**Dexter  
Cohen**

#### Class 3

**Lilliker M  
Break M**

#### Class 4

**Finley H  
Joshua Y  
Frankie T  
Florrie S**

#### Class 5

**Jessica L  
Max V  
Tom Y  
Mia T**

#### Class 6

**Timmy**

### School Dinner Orders

Can we please ask parents/guardians to check with their child before choosing their school lunches.

Many of our children are having lunches ordered for them that they do not like. This is causing problems as the kitchen only cook to order so it can be difficult to find enough spare meals.

Our Catering Team will always ensure a child gets something to eat but it may not be their preferred lunch if it has not been pre-ordered.

Thank you for your understanding.

### Reporting a Child's Absence

A reminder to parents/guardians:

If your child is going to be absent from school, can we please ask that you contact the school by 9.15am.

You can either leave a message via voicemail or by e-mailing the school.

Tel: 01709 570297 – press option 1 to leave a voicemail, state your child's name and the reason they will be absent.

Alternatively, you can e-mail: [enquiries@stp.dsat.education](mailto:enquiries@stp.dsat.education)

If you fail to contact the school by 9.15am, we will try to contact you by telephone / email. If we do not hear back from you by 10.30am the school will be forced to do a home welfare check. Please understand this procedure is in place to safeguard all our pupils.

Please click on the link below for helpful NHS guidance on when you shouldn't send your child to school if they are ill.

<https://www.nhs.uk/live-well/is-my-child-too-ill-for-school/>

Thank you for your co-operation.



## Valentines Disco Wednesday 11<sup>th</sup> February 2026



Key Stage 1 (Classes FS2, Year 1 and Year 2)  
from 3.15pm to 4.15pm

Key Stage 2 (Classes 3 to 6)  
from 4.15pm to 5.15pm

Tickets are priced at £3 each and include a hot dog and drink.  
There will also be a tuck shop selling sweet treats and various items.



*Price list*

Fruit shoot	£1
Candy Floss cup	£1
Bunny jelly bean tube	£1
Smarties	£1
Crisps	50p
Valentine slap band	50p
Light up fidget pop tube	£1.50
Finger light	£1

Friends of Kilnhurst St Thomas PTA

Tickets are on sale now at the school Office.



## Kilnhurst St Thomas' C of E Primary Academy Newsletter – Friday 30<sup>th</sup> January 2026



THE  
DIOCESE OF  
SHEFFIELD  
ACADEMIES  
TRUST

### Special Visitor

Our HIVE children had a special visitor on Wednesday this week. Meet Moose the Therapy Dog, isn't he gorgeous? The children loved meeting him and we can't wait for him to come again.



### Dates for your Diary – Spring Term 1

3<sup>rd</sup> February 2026 – Natural Disasters Family Workshop - Y3 Pupils and Parents/Guardians -9.30am  
(see class DOJO for details)

3<sup>rd</sup> February 2026 – Bullying and Kindness Workshop – Y4 - 2.00pm

5<sup>th</sup> February 2026 – Year 5 – Science day at Swinton Academy – see class DOJO for details

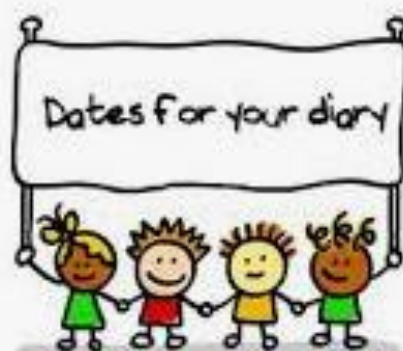
10<sup>th</sup> February 2026 – Year 3 visit to Swinton Academy for indoor athletics – details to follow

11<sup>th</sup> February 2026 – Valentines Disco – see above for further details

13<sup>th</sup> February 2026 – Break up for Half Term at 3.10pm

16<sup>th</sup> to the 20<sup>th</sup> February 2026 – School Closed for Half Term

23<sup>rd</sup> February 2026 – School re-opens at 8.40am for our second Spring Term









Kilnhurst St Thomas' C of E Primary Academy  
Newsletter – Friday 30<sup>th</sup> January 2026



THE  
DIOCESE OF  
SHEFFIELD  
ACADEMIES  
TRUST

SHEFFIELD  
**GIANTS**  
**ACADEMY**  
AMERICAN FOOTBALL

# JOIN THE GIANTS

Full contact and flag  
american football in  
Sheffield.

First sessions are free -  
just bring a gum shield and  
football boots or trainers.

// SAT 31 JAN  
// SAT 7 FEB  
// SAT 14 FEB  
// SAT 21 FEB  
// SAT 28 FEB

VENUE: SHEFFIELD PARK ACADEMY  
BEAUMONT ROAD NORTH



#BEGIANT

ACADEMY@SHEFFIELDDGIANTS.COM

WWW.SHEFFIELDDGIANTS.COM

## FLAG

12.00-13.30  
AGES 7-17

## CONTACT

13.30-14:00  
AGES 13-19





# At St Thomas, We Celebrate Everyone



At St Thomas, we are proud to be an inclusive school where every child is valued. We celebrate and understand both our similarities and our differences—because they make our community stronger.

We kindly ask parents and carers to support us by recognising the diverse needs of our children. Your empathy and understanding help us create a safe, respectful environment for all.

Together, we are role models of kindness, showing our children how to treat others with compassion and respect.

Thank you for being part of our caring school community.





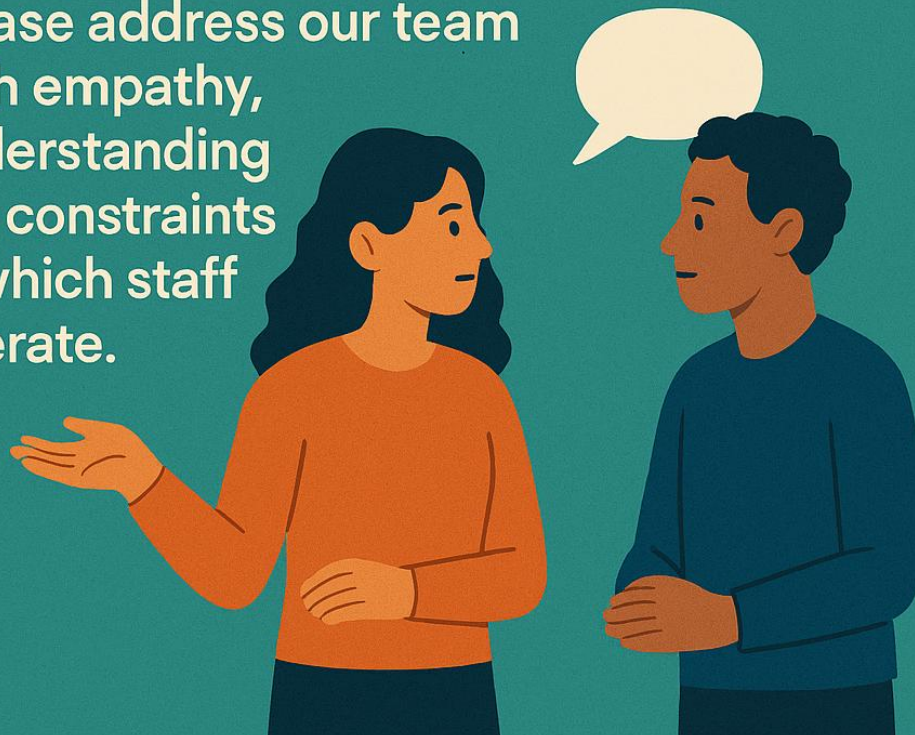


# In our school, we use kind words and calm voices

Thank you for setting a great  
example for our students.

## If you have a concern, we want to help.

Please address our team  
with empathy,  
understanding  
the constraints  
in which staff  
operate.







Did you know that pharmacies can now offer **clinical appointments** with medication available if required for four **clinical conditions** particularly relevant to **school age children**?



- ✓ Earache (Children aged 1-17)
- ✓ Sore throat (Over 5 years)
- ✓ Infected insect bites (Over 1 years)
- ✓ Impetigo (Over 1 years)



**THINK 'Pharmacy First'**



GP practices are busy, and it can be difficult to get a same day GP appointment. When your child is off sick from school with any of the above conditions, by going straight to your local Lo's Pharmacy you can have a consultation with a trained pharmacist, receive advice and even medication if needed. Meaning children could be on the road to recovery and back to school as soon as possible.

**Walk in's welcome**



**Kilnhurst St Thomas' C of E Primary Academy**  
**Newsletter – Friday 30<sup>th</sup> January 2026**



THE  
DIOCESE OF  
SHEFFIELD  
ACADEMIES  
TRUST

**Pops Outdoor Adventure Centre pick up children from St Thomas' daily.  
If you are interested in your child attending, please get in touch with them.**

**Pops Ranger Kids is unique club for children looking for adventure.  
What better way to end your School day by taking part in our After  
School Adventure Club? Packed full of activities, games and bushcraft to  
help you become an amazing outdoor adventurer!**

**Every Day After School Until 6:00pm**

**Pops Outdoor Adventure Centre**  
**– Rawmarsh**

The Bowling Green Pavilion,  
Rosehill Park, Rawmarsh,  
Rotherham. S62 7FL

**Rawmarsh: 01709 527023**

**[info@popsoutdooradventure.co.uk](mailto:info@popsoutdooradventure.co.uk)**